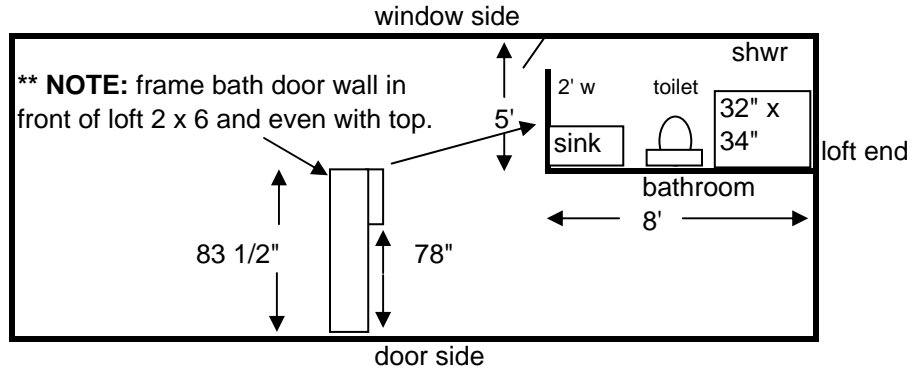


Bathroom can be framed under loft as shown or at other end of cabin allowing full interior height for door and head room.

Interior walls for bath:

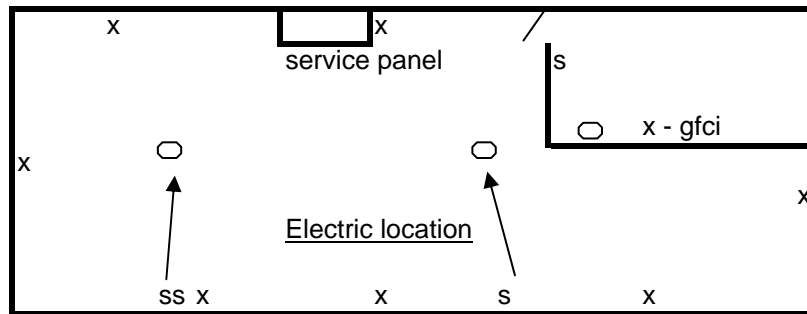
- 19 - 2 x 4 x 8
- 1 - 2' wide sink (laundry)
- 1 toilet-to-go kit
- 1 - 32" x 34" shower enclosure
- 1 - 28" RH int door w/knob
- 6 - 7/16" x 4 x 8 OSB



Optional: 2 x 4s could be used above bathroom to allow more head room in bathroom. Other loft 2 x 6s could end at side of bath wall.

Electrical:

- 1 - 100 amp 6 space service panel
- 4 - 20 amp breakers
- 250' - 12/2 elec wire
- 1 - 30 amp breaker
- 50' - 10/2 elec wire (water heater)
- 7 - receptacles (as shown by x)
- 10 - old work surface mount blue boxes
- 4 - lights (2 ceiling, 1 bath, 1 ext)
- 4 - switches
- 1 - double old work surface mount blue box
- 1 - GFCI receptacle
- 4 - old work surface mount blue ceiling light boxes
- 100 amp elec wire
- 2" conduit to pole



legend:

- light
- x receptacle
- s switch
- ss double switch

Plumbing:

- 4" pipe for house drain
- 2" pipe for vent
- 1/2" pipe for water supply (cold and hot)
- shower trap, drain pipe and supply pipe
- shower faucet and shower head
- sink trap, drain pipe and supply pipe
- sink faucet, shutoffs, flex lines to faucet
- toilet shutoff, supply pipe
- 3: toilet drain pipe
- main shutoff into house

- 30 gal water heater
- water heater supply pipe and two shutoffs